



FACT



Farrowing on Pasture



Introductions



Food Animal Concerns Trust (FACT) is a national nonprofit organization that works to ensure that all food-producing animals are raised in a humane and healthy manner.



Larissa McKenna & Samantha Gasson

FACT's Humane Farming Program Team

Email Larissa: lmckenna@foodanimalconcerns.org

Email Sam: sgasson@foodanimalconcerns.org

Website: foodanimalconcernstrust.org/farmer

FACT's services to support livestock and poultry farmers include:

- **Fund-a-Farmer Grants** (*Apply by January 20*)
- **Conference scholarships** (ongoing)
- **Customized handouts** (ongoing)
- **Free webinars** (ongoing)



Farrowing Pigs on Pasture

MIKE LEWIS, NATIONAL CENTER FOR APPROPRIATE TECHNOLOGY



Mike Lewis



Healing Ground Farm, Livingston, Kentucky





NATIONAL CENTER
FOR APPROPRIATE
TECHNOLOGY

NCAT:

<https://www.ncat.org/>

Armed to Farm:

<https://www.armedtofarm.org/>

Soil for Water:

<https://soilforwater.org/>

Renewable Energy:

<https://www.ncat.org/energy/>

AgriSolar Clearing House:

<https://www.agrisolarclearinghouse.org/>

ATTRA:

<https://attra.ncat.org/>





NATIONAL CENTER
FOR APPROPRIATE
TECHNOLOGY

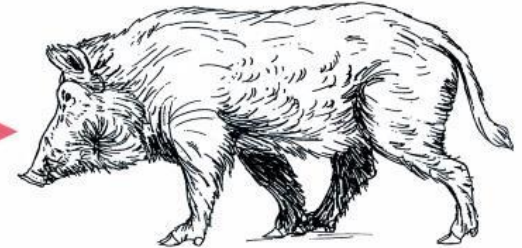
Agenda:

1. History and overview of pigs
2. Confinement vs pasture
3. Pasture considerations
4. Housing
5. Animal Selection
6. Breeding considerations
7. Animal health
8. Q & A

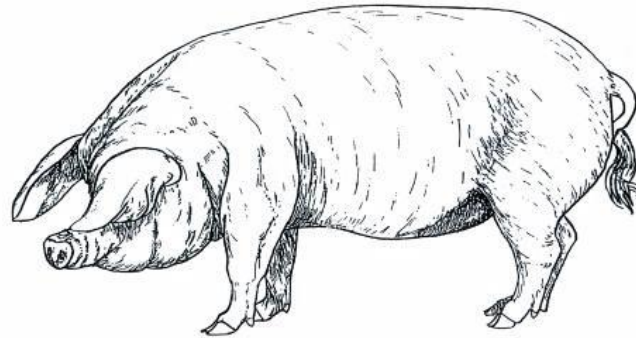




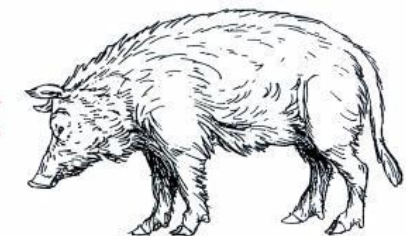
Wild boar (*Sus srofa*)



Neolithic domestic pig



Today's domestic pig



Domestic pig from the iron age

(Rokkam, 2019)



NATIONAL CENTER
FOR APPROPRIATE
TECHNOLOGY

Pasture Versus Confinement



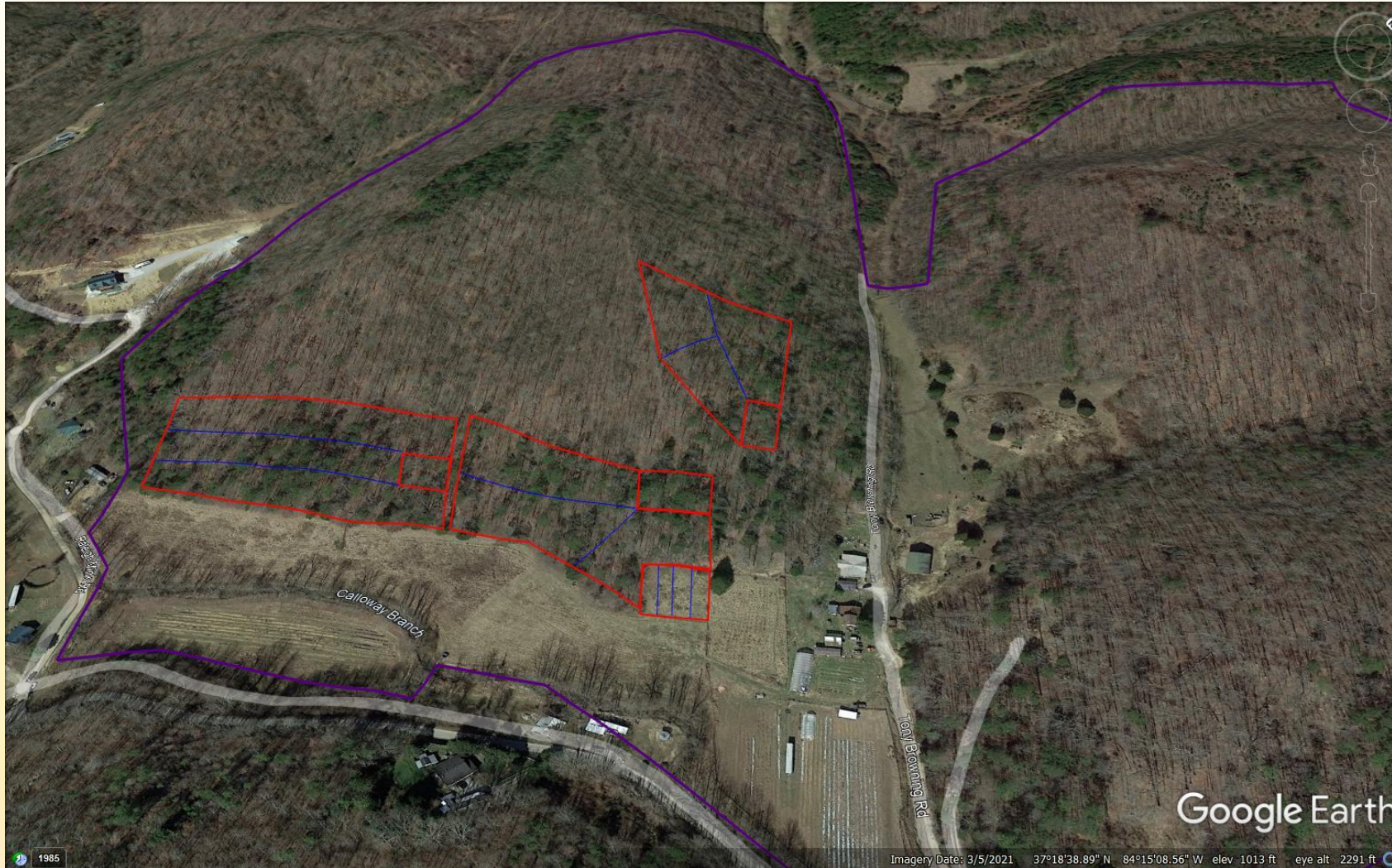
“One does not act rightly toward one's fellows if one does not know how to act rightly towards the earth.” Liberty Hyde Bailey





NATIONAL CENTER
FOR APPROPRIATE
TECHNOLOGY

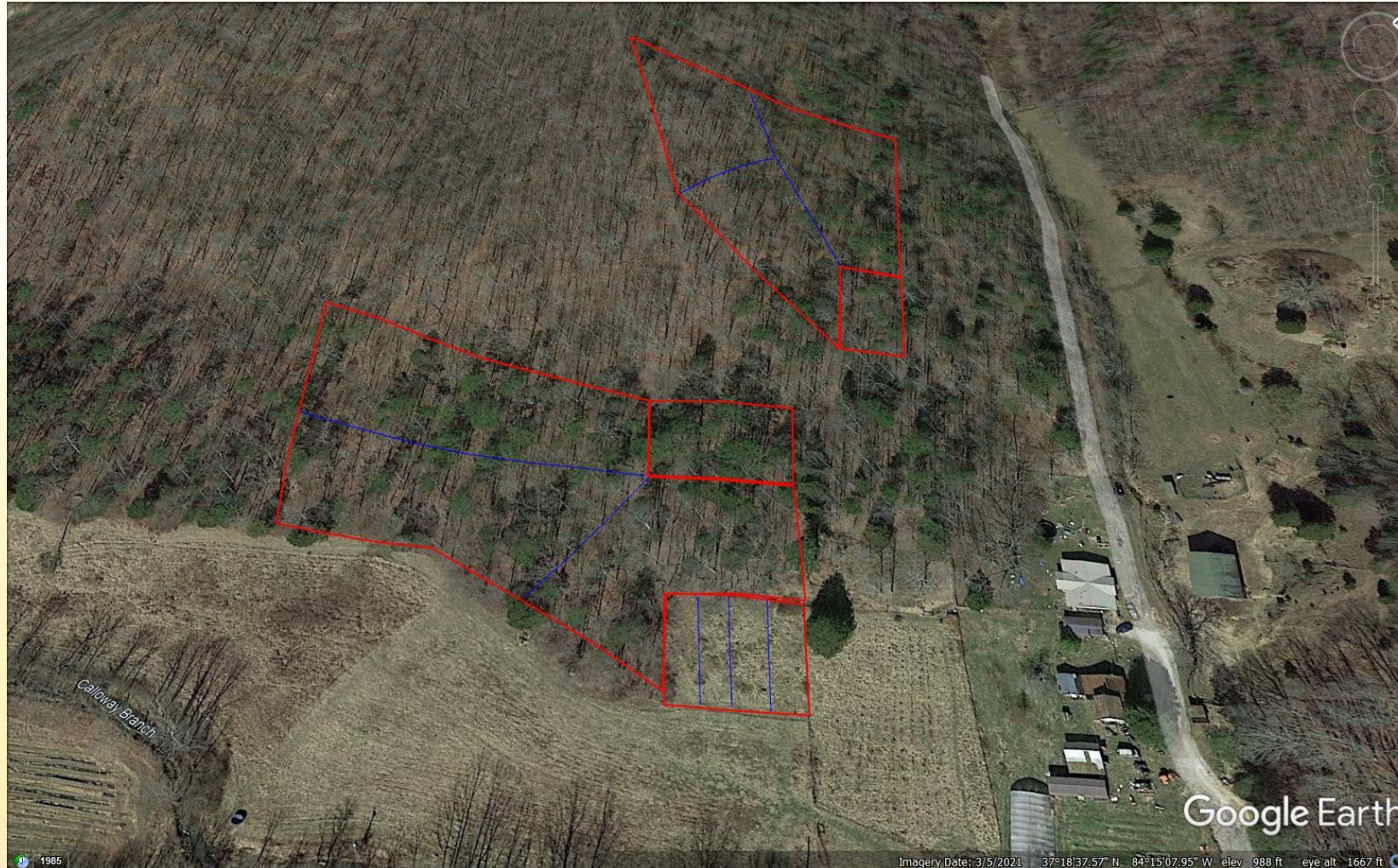
Pasture Considerations





NATIONAL CENTER
FOR APPROPRIATE
TECHNOLOGY

Pasture Considerations





NATIONAL CENTER
FOR APPROPRIATE
TECHNOLOGY

Farrowing Huts



Hut plans: <https://practicalfarmers.org/wp-content/uploads/previous/2016/07/E-Hut-Plans.pdf>





NATIONAL CENTER
FOR APPROPRIATE
TECHNOLOGY

Farrowing Huts





NATIONAL CENTER
FOR APPROPRIATE
TECHNOLOGY

Breed Selection





NATIONAL CENTER
FOR APPROPRIATE
TECHNOLOGY

Breed Selection

1. Large Black
2. Red Wattle
3. Tamworth
4. KuneKune
5. Iowa Pasture
6. Duroc
7. Gloucestershire Old Spot
8. Guinea hog
9. Hampshire
10. Mangalista





When to Breed



1. How much pasture do you have and what is the quality of it in terms of forage?
2. How much time do you have to contribute?
3. What is the weather like?

<https://gestationperiods.com/pig-gestation-period-calculator>



Farrowing Preparation



1. Prepare the farrowing hut
2. Check in with your sows
3. Increase Sow feed 4-6lbs./day
4. Monitor sows



NATIONAL CENTER
FOR APPROPRIATE
TECHNOLOGY

Still Birth Considerations & Reduction



1. High Parity
2. Over conditioning
3. Oxytocin
4. History of Still Births in Sow



Piglet health

1. Clean and Dry
2. Get warm
3. Colostrum
4. Split Suckling
5. Minimize transfers
6. Do not ignore Fallbacks
7. Monitor daily



Sow considerations

1. Monitor daily.
2. Is she eating.
3. Clean feeders daily
4. Clean water
5. Monitor manure
6. Evaluate overall health
7. Walk your sow



NATIONAL CENTER
FOR APPROPRIATE
TECHNOLOGY



Common Swine Health Issues

1. Coccidiosis
2. Respiratory
3. Anemia
4. Swine dysentery
5. Mastitis
6. Greasy Pig Disease
7. Parasites



NATIONAL CENTER
FOR APPROPRIATE
TECHNOLOGY

Questions & Resources

Paddock design:

<https://attra.ncat.org/product/paddock-design-fencing-and-water-systems-for-controlled-grazing/>

Farrowing huts: <https://practicalfarmers.org/wp-content/uploads/previous/2016/07/E-Hut-Plans.pdf>

Sow health: <https://www.pigprogress.net/pigs/there-is-so-much-more-to-know-about-sows/>

Rotations: <https://attra.ncat.org/product/rotational-grazing/>

Split Suckle: <https://www.thepigsite.com/articles/split-suckle-to-survive>

Overall Health: https://projects.ncsu.edu/project/swine_extension/healthyhogs/book2000/baker.htm

Gestation calculator: <https://gestationperiods.com/pig-gestation-period-calculator>

Organic production: <https://attra.ncat.org/product/raising-organic-pigs-a-guide-to-usda-certified-organic-requirements/>

Managed grazing: <https://attra.ncat.org/managing-rotational-grazing-for-pigs-and-poultry-2/>



Thank you!



attra.ncat.org

Connect with **FACT**

Food Animal Concerns Trust

Upcoming webinars

- 🐔 **January 26:** Grazing for Resilience - Bouncing Forward from Catastrophic Events
- 🐔 **January 31:** Converting Woodland into Silvopasture Part 1
- 🐔 **February 7:** Converting Woodland into Silvopasture Part 2
- 🐔 **February 24:** Medicinal Grazing and Unexpected Outcomes

Grants, Scholarships, Training, Mentorship & More!

- 🐔 **Fund-a-Farmer Grants** – *Apply by January 20, 2022*
- 🐔 **Customized handouts** on the nutritional benefits of food from pastured animals
- 🐔 **Scholarships** – *ongoing*

Sign up for emails @ foodanimalconcernstrust.org/farmer/

Join us on social media

